

WORKPLACE STRATEGY SUMMIT NSW

AUSTRALIA & NEW ZEALAND'S MOST ESTABLISHED WORKPLACE SUMMIT

12TH SEPTEMBER 2024

DOLTONE HOUSE,
JONES BAY WHARF, SYDNEY



SPEAKERS



Canva

TOM MCNAMARA

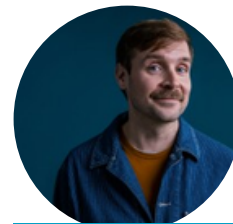
Global Lead of Space Creation



Telstra

DOUG HALL

Principal Property, Fleet, Assets & Transaction Manager



Genentech

BRANDON DEWITT

Senior Director - Head of Workplace Strategy & Integration



UNSW SYDNEY

IVA DURAKOVIC

Researcher & Lecturer of Interior Architecture



ATLASSIAN

JAKE MASCARENHAS

Senior Program Manager of Global Real Estate Strategy, Design & Development



News Corp

LISA HARRIES

Head of Real Estate & Planning

KEY TOPICS

- Preparing for the office of 2030: Reimagining what normal looks like
- How much space do we really need? Reassessing the fundamentals of office requirements
- Beyond Boundaries: Exploring how technology can shape the future workplace
- Green Horizons: A case study on building sustainable buildings for the future

WHO WILL ATTEND?

- Heads of Workplace
- Heads of Property & Facilities
- Heads of CRE
- Heads of Property & Infrastructure
- Heads of Workplace Experience
- Heads of Space Design
- Heads of Operations

#FOREFRONTEVENTS

8:30 REGISTRATION, COFFEE & NETWORKING

9:00 WELCOME REMARKS FROM CHAIRPERSON

Jamie Toko, Portfolio Manager, Mirvac



9:10 ATTENDEE SCENARIO What does the workplace of the future look like?

9:40 PANEL DISCUSSION: PREPARING FOR THE OFFICE OF 2030: REIMAGINING WHAT NORMAL LOOKS LIKE

- Analysing macro trends to forecast future requirements of your workforce
- A home away from home: Cultivating loyalty and belonging through connection to place
- Future-proof fit outs: Incorporating sustainability and agility throughout workplace changes
- Cities of the future: The role of the workplace in building green ecosystems

Doug Hall, Principal of Property, Fleet, Assets & Transaction Management, Telstra

Ed Jacka, Deputy Head of Workplace, Reserve Bank Australia

Iva Durakovic, Researcher & Lecturer of Interior Architecture, School of Built Environment, UNSW

Sonja Duric, Director, Hames Sharley

Irena Bakulic, Head of Property, Allianz

10:20 PRESENTATION: HARNESSING WELLNESS IN THE WORKPLACE

Emma Rousek, National Manager, Marketing & Customer, Office & Industrial Asset Management, Mirvac

Kris Shaw, Head of Services, Florence Guild

10:50 SPEED NETWORKING

11:00 MORNING TEA & NETWORKING

11:30 PRESENTATION: INVISIBLE FORCES, VISIBLE IMPACT: LEVERAGING ANALYTICS FOR SMARTER WORKSPACE DESIGN

Steve Gale, Head of Technology Strategy, M Moser Associates

12:00 PANEL DISCUSSION: HOW MUCH SPACE DO WE REALLY NEED? REASSESSING THE FUNDAMENTALS OF OFFICE REQUIREMENTS

- Identifying the size and space requirement of your workforce
- Tailoring the office layout to unique team functions
- Designing collaborative spaces that break anti-social work habits
- Facilitating change: Implementation of resource management systems

Tony Hall, Vice President Property, Worley

Lisa Harries, Head of Real Estate & Planning, NewsCorp

Arthur Begetis, Senior Director, Global Real Estate, ResMed

Robert Garrett, Senior Workplace Change Manager, Perpetual Limited

Shauna Lore, Senior Workplace Experience Specialist, Pager Duty

12:40 LUNCH & NETWORKING

1:30 PRESENTATION: OWNING THE UNKNOWN: DATA & THE HYBRID WORKPLACE

Jared Horstman, APAC Commercial Manager, XY Sense

2:00 PANEL DISCUSSION: BEYOND BOUNDARIES: EXPLORING HOW TECHNOLOGY CAN SHAPE THE FUTURE WORKPLACE

- How technology can revolutionise the way we manage space
- Leveraging in-depth behavioural data to inform strategy
- The potential of AI to enhance workplace efficiencies

Tom McNamara, Global Lead of Space Creation, Canva

Jake Mascarenhas, Senior Program Manager - Global Real Estate Strategy, Design & Development, Atlassian

Genevieve Wardell, Regional Workplace Manager APJ, Okta

Alana Divan, Manager of Property Services, Insignia Financial

Brandon DeWitt, Senior Director - Head of Workplace Strategy & Integration, Genentech USA [virtual]



2:40 PRESENTATION: EXPLORING THE FUTURE OF 'COMFORT BASED WORKING'

Sonja Duric, Director, Hames Sharley

3:10 AFTERNOON TEA & NETWORKING



3:30 KEYNOTE: REVISITING ASSUMPTIONS FOR A REIMAGINED WORKPLACE

Dr Agustin Chevez, Workplace Provocateur, Architect & Researcher, University of Melbourne

4:00 CLOSING REMARKS

4:10 NETWORKING DRINKS

5:10 EVENT ENDS